

Beyond the Institutional Repository

Hydra for Cultural Heritage

Julie Allinson, University of York

Jon Stroop, Princeton University Library

Hydra Connect 2016



Challenges

Magpie Collecting

- Lots of disparate collections
 - Different types of content
 - Different audiences and use cases
 - Different access and preservation policies
 - Different metadata requirements and data models, often complex
- Single interface and workflow can't serve them all fully
- Bespoke interfaces costly to develop and maintain



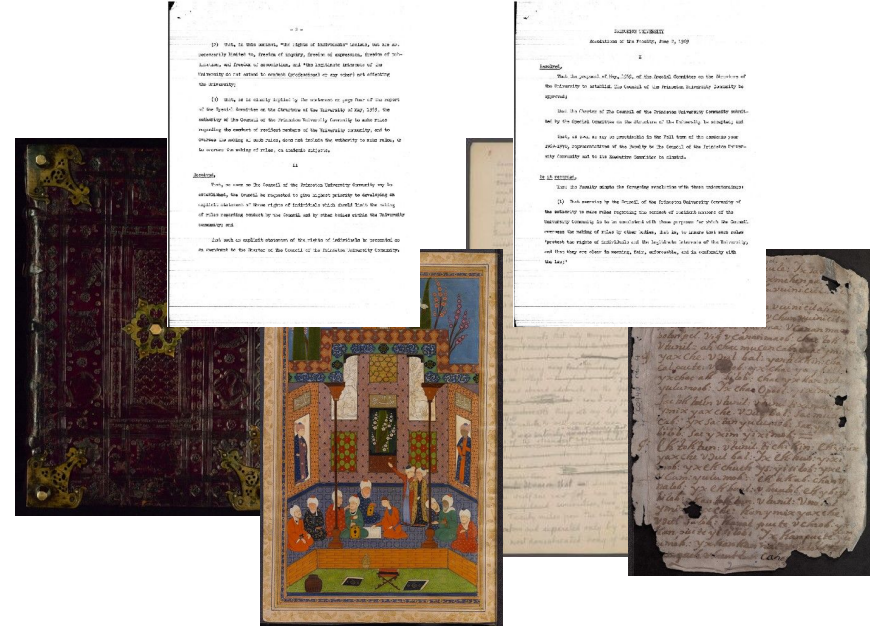
Image-Based Collections are Large!

- Books can have thousands of pages
- Book or Photograph Collections can have thousands of Objects
- Average Digital MSS @ PUL is 60 GB
- A/V makes this look small
- Significant impact on ingest workflow



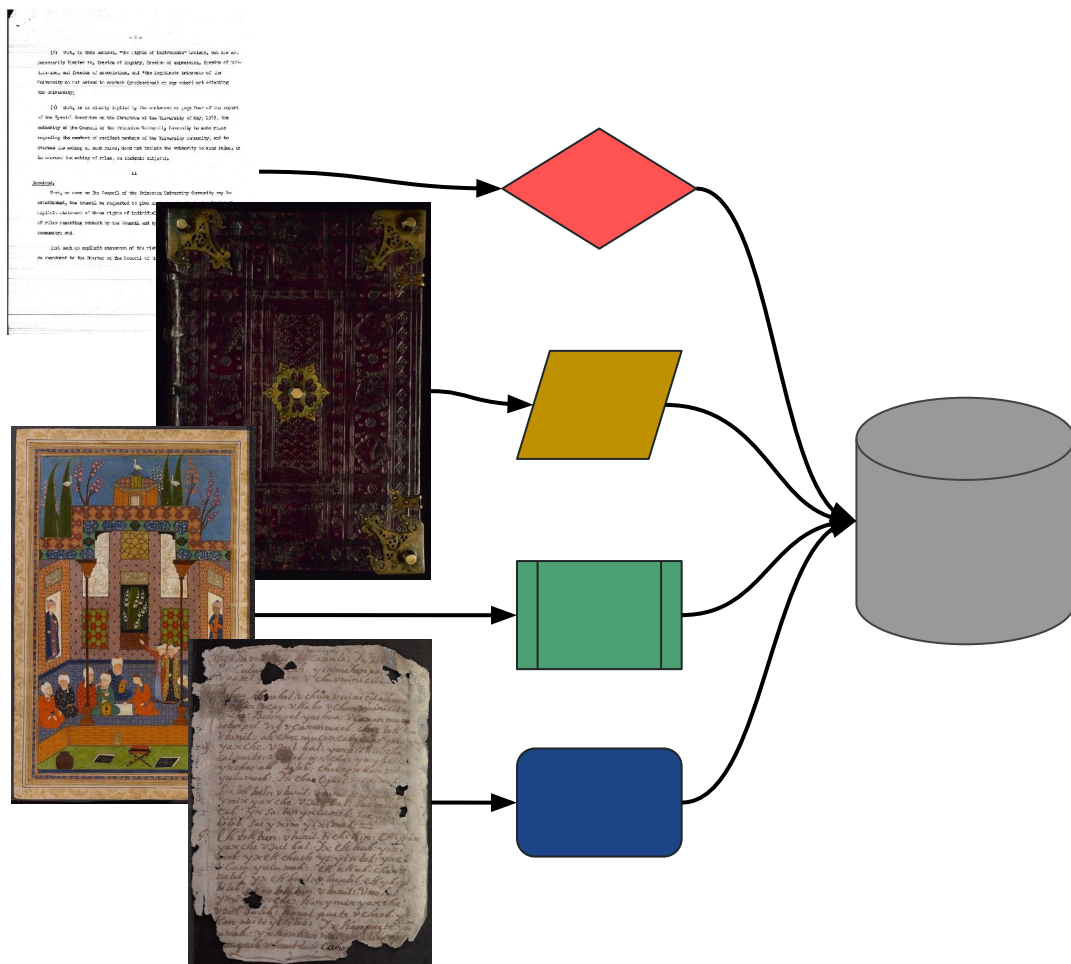
Multiple Sources of Content

- Proactive / Reactive Digitization
- Different workflows
- Complicated permissions
- Partial Objects (may be completed later)
- Different levels of Preservation Treatment



Many Ways In

- Different Sources of Content
- Varying Scale
- Specialized Data Models
- Work with Vendors



Many Ways Out

- Library Catalog
- Thematic Digital Library Collections
- Exhibitions
- Blogs
- Courseware / Teaching Material
- IIF....



Examples

York Cause Papers

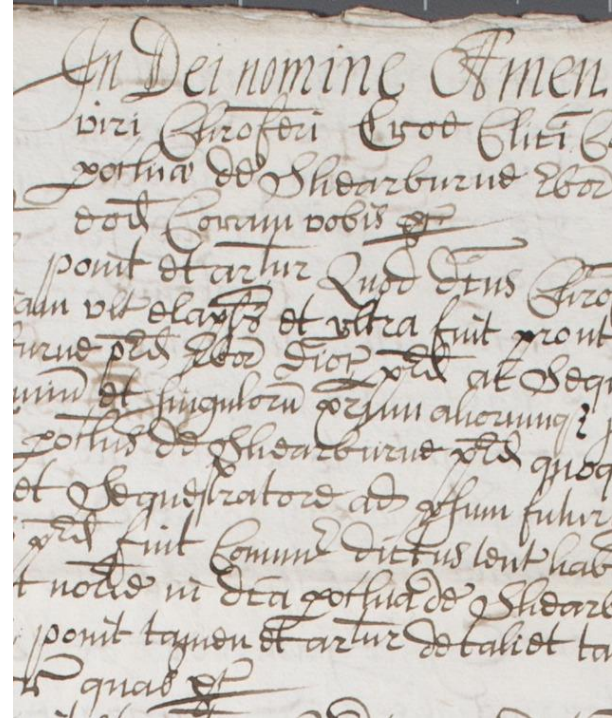
~ 250,000 images (1m including derivatives)

Book / Page relationship - order important

Public access via external site

Metadata exists externally (has it's own XML schema)

Digital Surrogate, 'level 2' preservation



Archaeology Slides



> 6,000 Images

Single images in thematic groups (Archaeological digs)

Public access via YODL

Metadata from spreadsheet

Original slides discarded, 'level 1' preservation

Latin American Ephemera

~6K images to date

Living Collection

Awkward Multi-Stage Workflow

- Imaging from Inventory
- Cataloging from Image



William Etty Exhibition

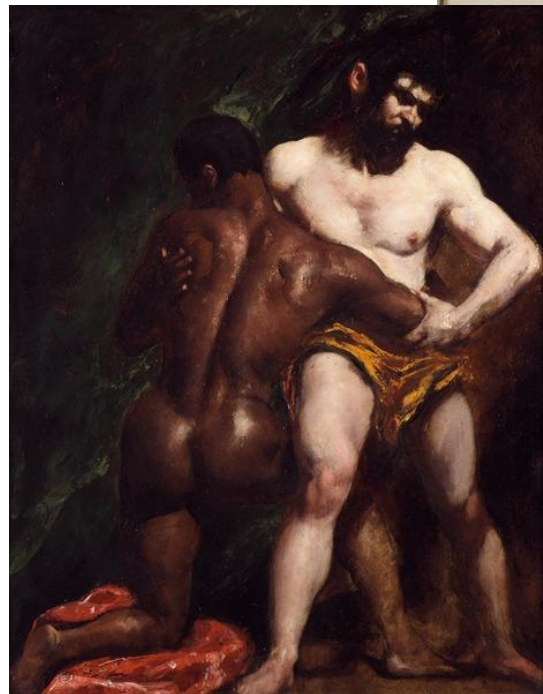
< 500 images

Mix of single images (artworks) and book / page (sketchbooks)

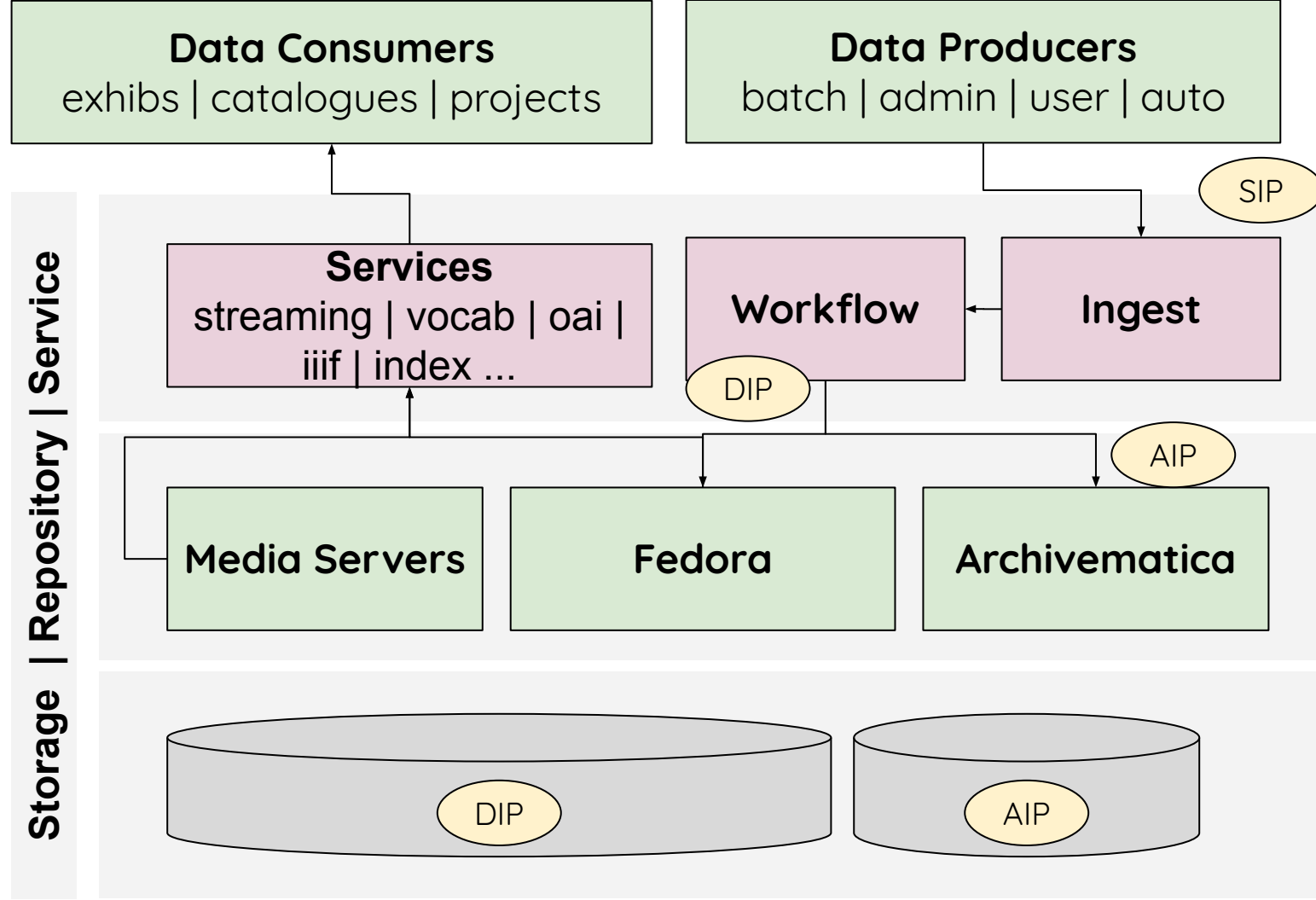
Some public (York Art Gallery), some restricted (licensed for 3 years); no download

Metadata needed for exhibition

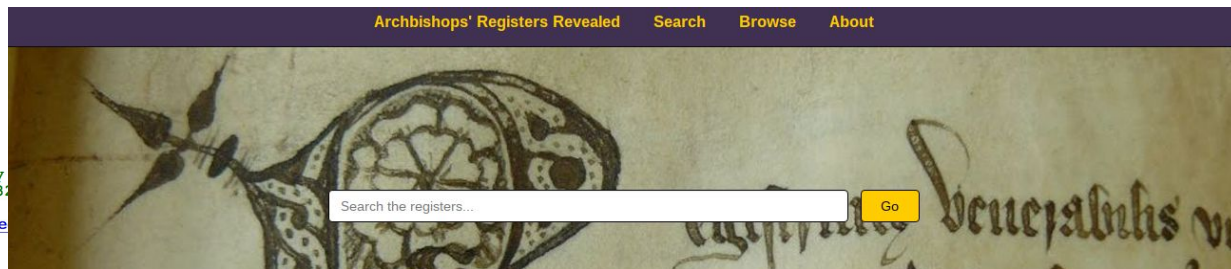
Third party content, no preservation required.



Solutions



```
[
  {
    id: "jd472w463",
    label: "Neale, Richard, 1562-1640, Archbishop of York",
    family: "Neale",
    pre_title: null,
    given: "Richard",
    dates: "1562-1640",
    epithet: "Archbishop of York",
    post_title: null,
    dates_of_office: "1632-1640",
    note: "Bishop of Rochester, 1608-1610; Bishop of Coventry & Lichfield, 1610-1614; Bishop of Lincoln, 1614-1617; Bishop of Durham, 1617-1628; Bishop of Winchester, 1628-1632; Will made 23 June 1640 (Register 32) (YAS 93)",
    related_authority: [
      {
        url: "http://www.british-history.ac.uk/search/series/fasti-ecclesiae",
        text: "CCEd Person ID: 28361"
      }
    ],
    variants: [
      {
        text: "Neile (ODNB)"
      }
    ],
    used: [
      {
        text: "used"
      }
    ]
  },
  {
    id: "v692t621m",
    label: "Neale, John, d 1675, Archdeacon of Cleveland",
    family: "Neale",
    pre_title: null,
    given: "John",
    dates: "d 1675",
    epithet: "Archdeacon of Cleveland",
    post_title: null,
    dates_of_office: "1638-1675",
    note: "Prebendary of North Newbald, 1634-1660; Prebendary of Strensall, 1660-1675",
    related_authority: [
      {
        url: "http://www.british-history.ac.uk/search/series/fasti-ecclesiae",
        text: "CCEd Person ID: 28361"
      }
    ],
    variants: null,
    used: [
      {
        text: "used"
      }
    ]
  }
]
```



Neale, John, d 1675, Archdeacon of Cleveland	<button>Show Details</button>
Neale, Richard, 1562-1640, Archbishop of York	<button>Hide Details</button> Family Name: Neale Given Name: Richard Dates: 1562-1640 Dates of Office: 1632-1640 Epithet: Archbishop of York Variants: Neile (ODNB); Note: Bishop of Rochester, 1608-1610; Bishop of Coventry & Lichfield, 1610-1614; Bishop of Lincoln, 1614-1617; Bishop of Durham, 1617-1628; Bishop of Winchester, 1628-1632; Will made 23 June 1640 (Register 32) (YAS 93) Related Authority: http://www.british-history.ac.uk/search/series/fasti-ecclesiae , http://www.oxforddnb.com/ CCEd Person ID: 28361
Nelson, Christopher, d ? 1621, Rector of Londesborough	<button>Show Details</button>

Authority Files driven-by and
exposed using Questioning Authority
Gem

"@context": <http://iiif.io/api/presentation/2/context.json>,
"id": <https://archbishopsregisters.york.ac.uk/iiif/manifest/vx021>
"label": "The Visitation of Beverley",
"description": "The Visitation of Beverley",
"license": "https://creativecommons.org/licenses/by-sa/4.0/",
"thumbnail": <http://archbishopsregisters.york.ac.uk/cgi-bin/iipsrv.fcgi?IIIF=/usr/di/200,70/default.jpg>,
sequences: [

IIIF support for identifying illustrative
thumbnails (below), driving paging
(left) and sharing manifests



Abp Reg 1A
Abp Reg 1A:
Walter de Gray
(1215-1255)
Major roll
1225-1235



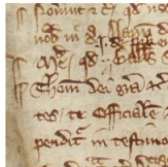
Abp Reg 1B
Abp Reg 1B:
Walter de Gray
(1215-1255)
Minor roll
1235-1255



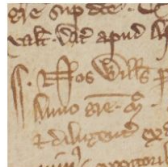
Abp Reg 2
Abp Reg 2:
Walter Giffard
(1266-1270)



Abp Reg 5A
Abp Reg 5A:
Sede Vacante
Registers



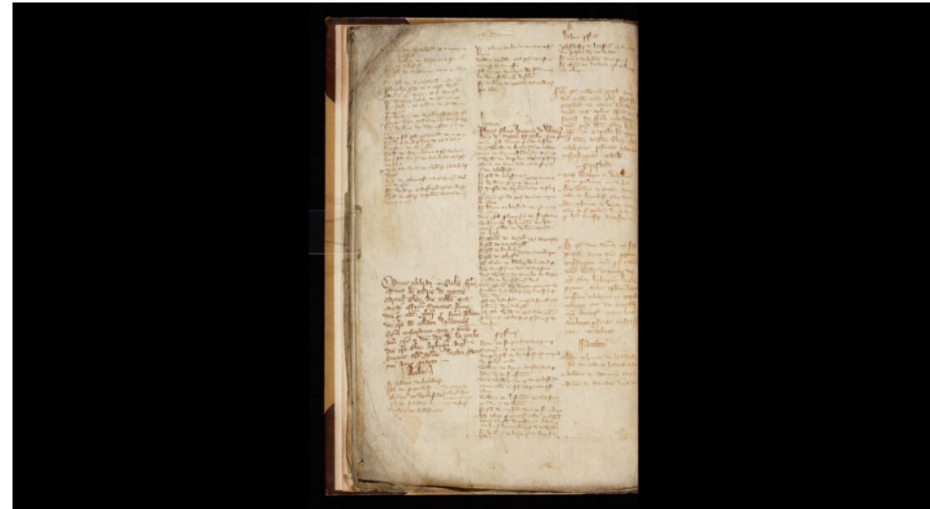
Abp Reg 6
Abp Reg 6:
Thomas
Corbridge
(1300-1304)



Abp Reg 7
Abp Reg 7:
William
Greenfield
(1306-1315)

Abp Reg 10A: William Zouche (1342-1352) Ordination register

Showing 38 of 138 [Abp Reg 10A f.14 \(verso\)](#)



[.ac.uk/browse/registers](https://archbishopsregisters.york.ac.uk/browse/registers)

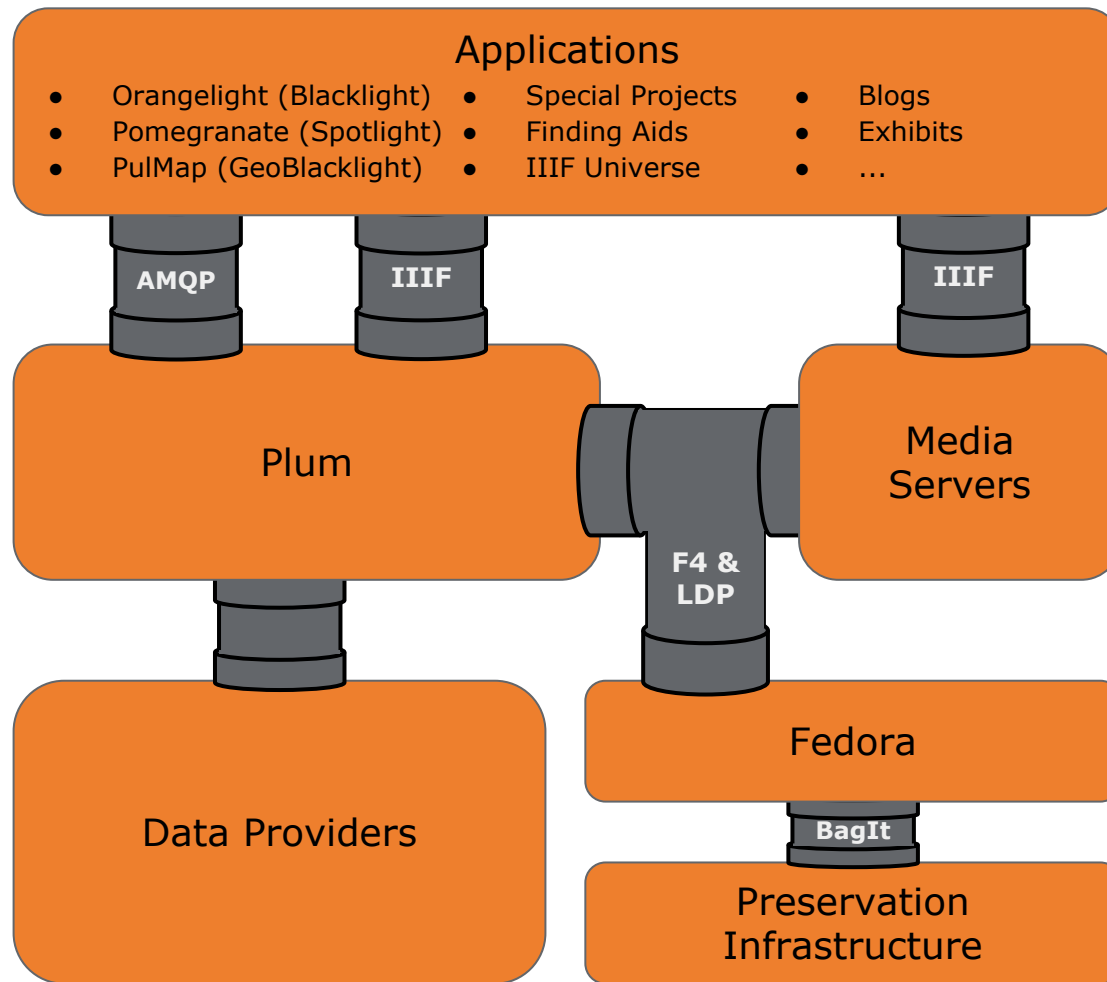
[rs.york.ac.uk/iiif/c](https://archbishopsregisters.york.ac.uk/iiif/c)

at board",

[psregisters.york.ac](https://archbishopsregisters.york.ac.uk)

[ishopsregisters.york.ac.uk/iiif/g445cf195,](https://archbishopsregisters.york.ac.uk/iiif/g445cf195,)
[iif.io/api/image/2/context.json](http://iiif.io/api/image/2/context.json),
[.io/api/image/2/level1.json](http://iiif.io/api/image/2/level1.json)

[sters.york.ac.uk/browse/registers?register_id=g445cf195&folio=1&folio_id=g445cf195,](https://archbishopsregisters.york.ac.uk/browse/registers?register_id=g445cf195&folio=1&folio_id=g445cf195)



Watch this space...
