

# WILLOW

powered by Samvera

Flexible  
Open Source  
Supported

## Samvera, Willow, and RDM in Europe

Cottage Labs

Richard Jones - [richard@cottagelabs.com](mailto:richard@cottagelabs.com)



What is Samvera-Europe?

Why RDM and what is the Jisc RDSS Framework?

What is Willow?

How does the community benefit



# The Samvera Europe Members

<https://groups.google.com/forum/#!forum/samvera-europe>

- **Cottage Labs** - Service provider and consultants
- **Durham University** - Samvera user
- **Lancaster University** - Samvera user
- **LSE** - Samvera partner
- **Senate House Library** - Samvera user
- **Trinity College Dublin** - Samvera user
- **University of London** - Service provider and consultants
- **University of Hull** - Samvera partner
- **University of Oxford** - Samvera user
- **University of York** - Samvera partner
- **Royal Library of Denmark** - Samvera partner
- Soon to be more ...





“Research organisations will ensure that EPSRC-funded research data is securely preserved for a minimum of 10-years from the date that any researcher ‘privileged access’ period expires or, if others have accessed the data, from last date on which access to the data was requested by a third party.”

<https://www.epsrc.ac.uk/about/standards/researchdata/>





“We’re working on a pilot service to allow researchers and institutions to meet their policy requirements for the deposit and curation of research data.”

- A new system that can be offered as a managed service, relieving burden from institutional IT and procurement staff
- Procure research data management (RDM) services and consultancy to support pilot institutions' RDM requirements and implementation

**Jisc RDSS**



This is where we come in

<https://www.jisc.ac.uk/rd/projects/research-data-shared-service>



## WILLOW

Open source  
Jisc infrastructure  
Community Benefit

## Islandora

Open source  
Jisc infrastructure  
Community Benefit

## Haplo

Open source  
Jisc infrastructure

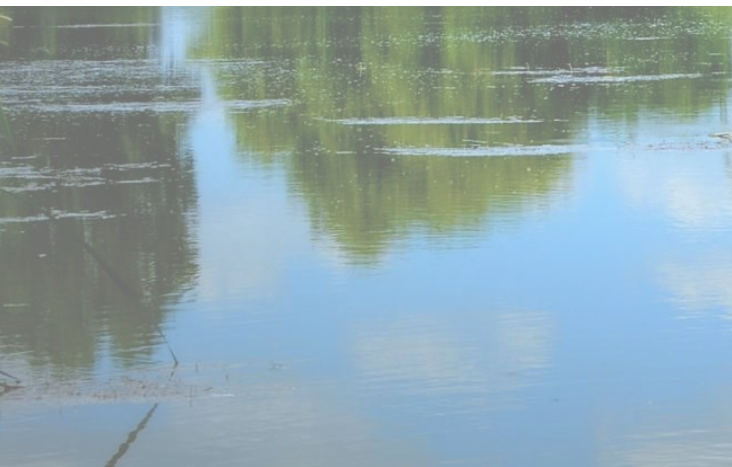
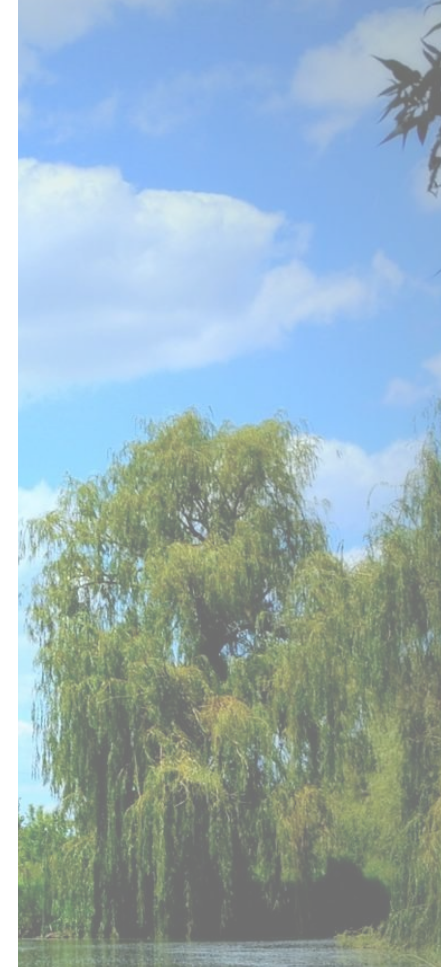
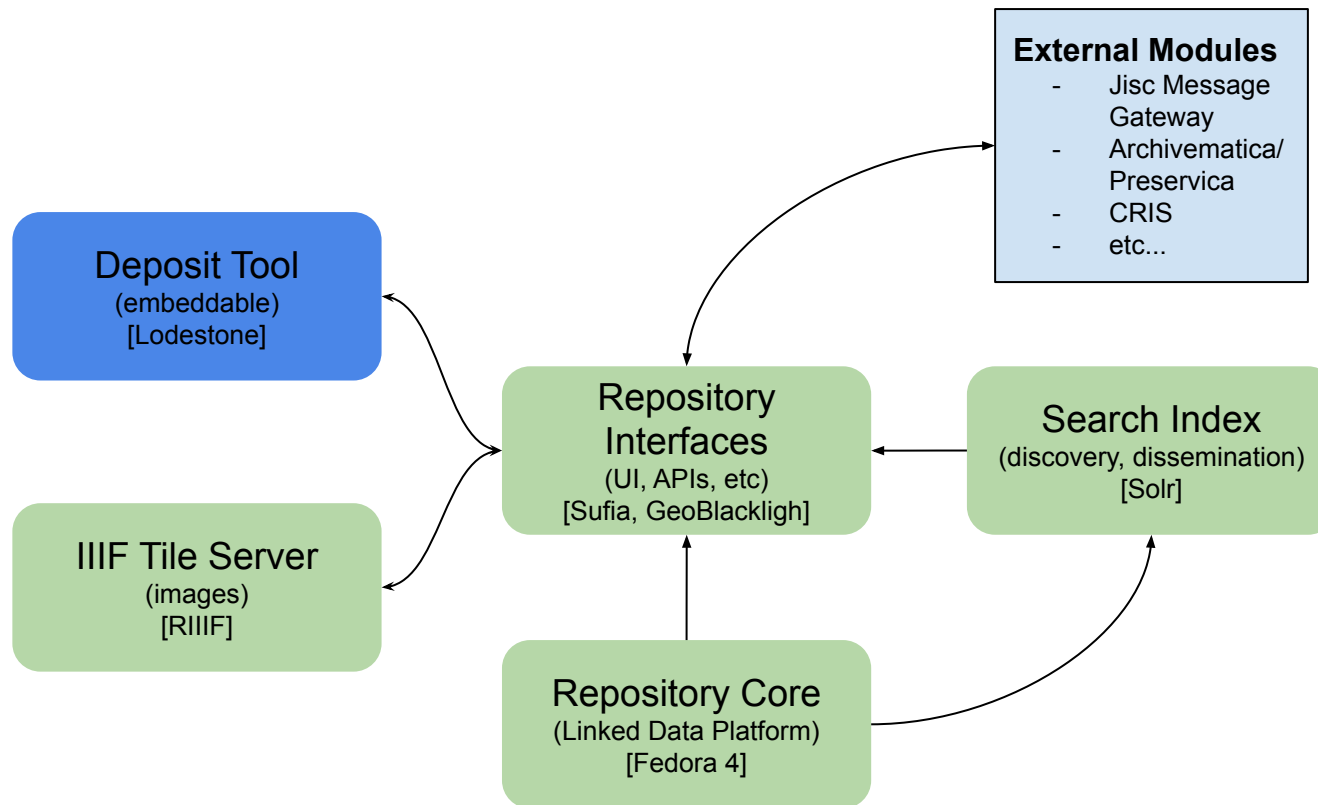
## FigShare

Proprietary  
Own infrastructure

# Jisc RDSS Suppliers

We are one of 4 suppliers in the framework

<https://www.jisc.ac.uk/rd/projects/research-data-shared-service>

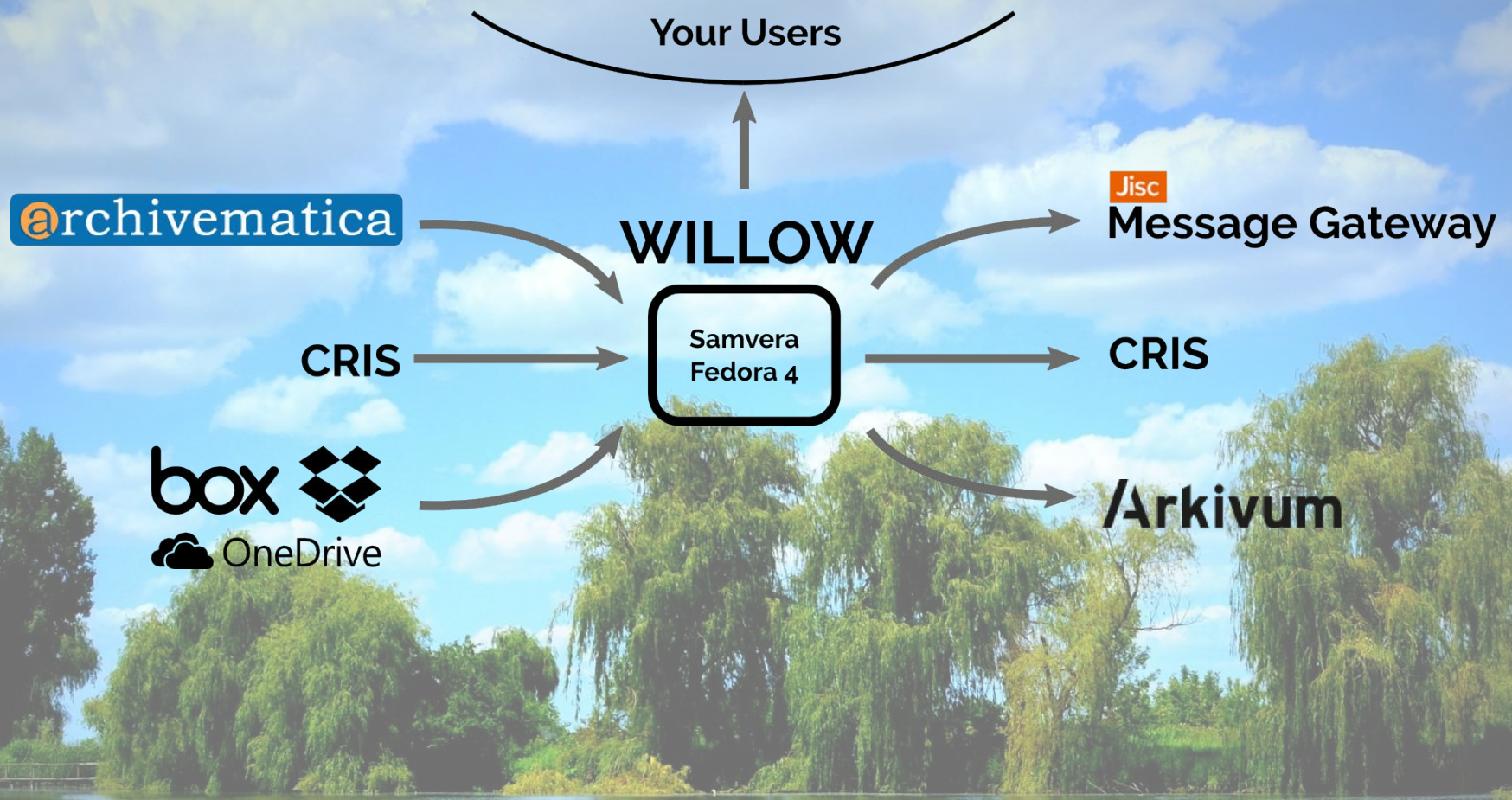


# WILLOW

A collection of supported and integrated Samvera components.  
Hosted and maintained as you need.

<https://cottagelabs.com/willow>

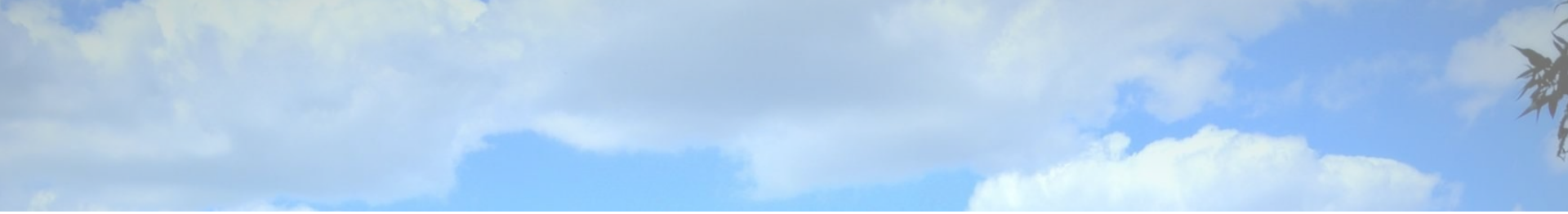




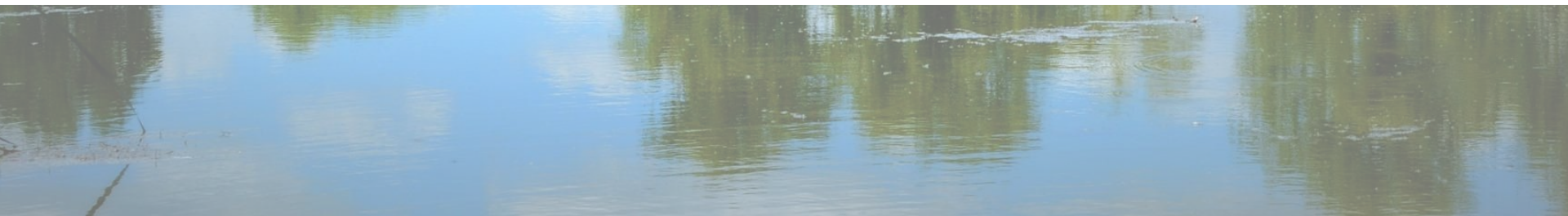
## Integrations

Willow is built to be integrated with a variety of software and services which are valuable to the research community.





# Community





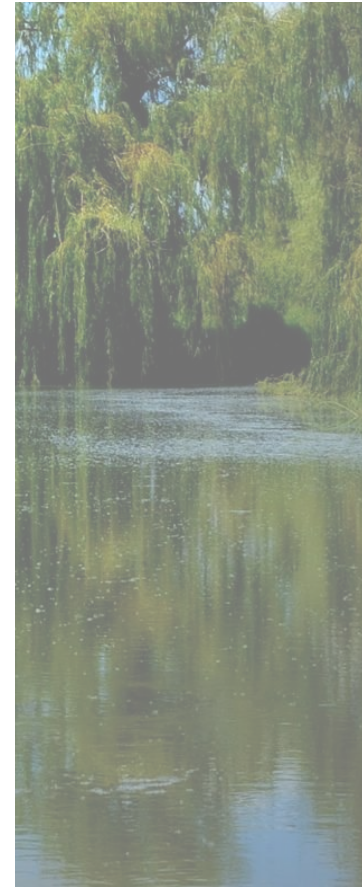
# Enhancements to Samvera

Through RDSS and other work in the Willow team...

Implementation of SWORDv2 and OAI-PMH

Work to containarise the Fedora/Samvera stack for ease of deployment both locally and in the cloud

We hope to be contributing these to the community over the course of this year

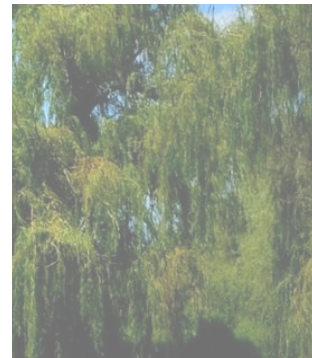
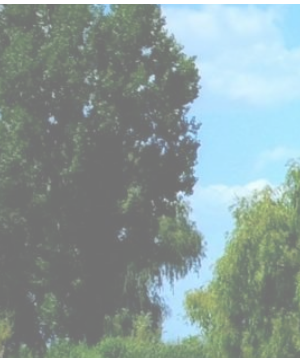


Samvera Europe user  
group

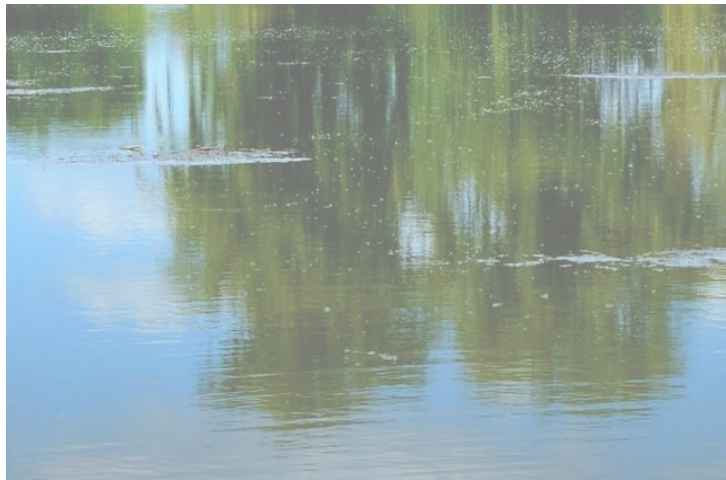


Presentations and  
Demos in Europe

## **Raise the profile of Samvera in Europe**



Exposure via  
RDSS  
Framework



Offer flexible  
development,  
hosting,  
maintenance and  
support



# WILLOW

powered by Samvera

Flexible  
Open Source  
Supported

## Thanks for listening

<https://cottagelabs.com/willow>

<https://groups.google.com/forum/#!forum/samvera-europe>

Cottage Labs

Richard Jones - richard@cottagelabs.com